

Projects

Big Sky Institute Site Development Plan Big Sky, Montana



Owner
Big Sky Institute
PO Box 173490

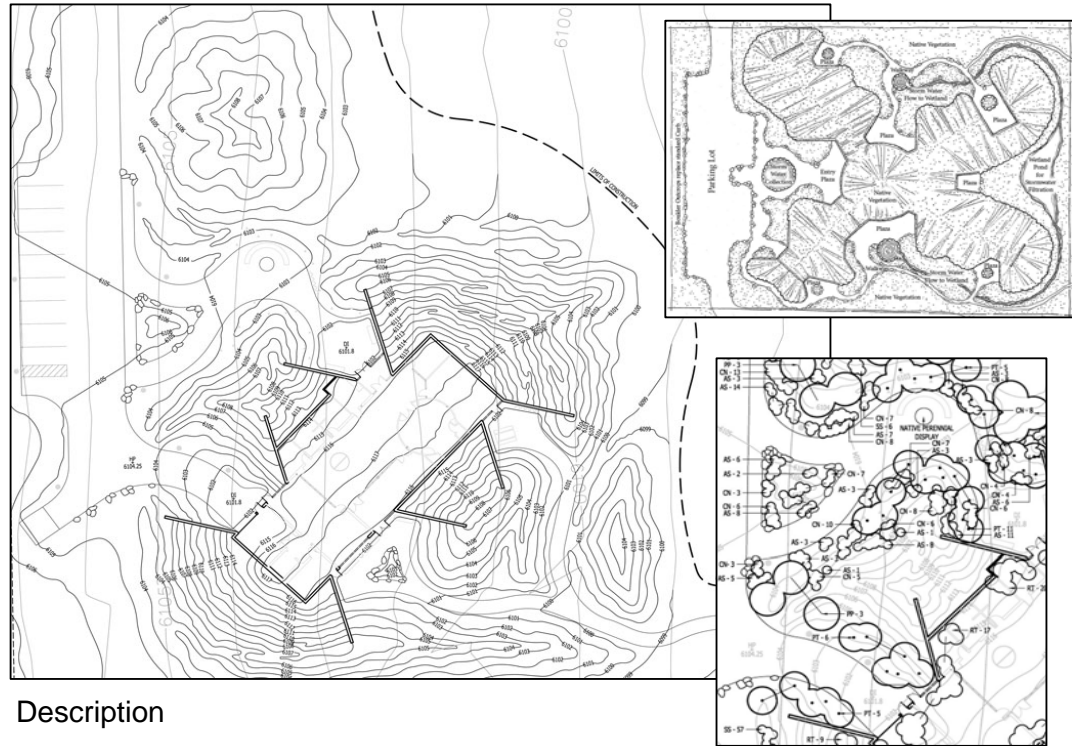
Bozeman, MT 59717-3490

Completion Date
2007

Project Cost
Project not yet built

Work Responsible For
100% of Site Planning & Landscape Design

Consultants
A&E Architects (Architecture)
Jonathan Foote, AIA (Architecture)



Description

The Big Sky Institute commissioned Foley Group along with the architects to develop a Field Station concept for their education, research and visitation facilities. The building was to blend seamlessly into the landscape and meet LEED certification credentials. The final concept was for an earthen-sheltered structure that could be developed in four phases. Other than entry facades, the building was completely covered with earth that undulated to replicate the native alpine meadow landscape. The site design called for a low water landscape of native grasses, forbs and shrubs to replicate the existing landscape prior to construction. The parking areas were well hidden from highway views by the earthen structures. Bicycle and pedestrian access was promoted through trail linkages. All stormwater drainage was to be detained on site and filtered through landscape materials. Many of the specified materials were to be obtained from local suppliers including recycled fly ash within the paved surfaces. The end product was to be highly energy efficient and lie lightly on the landscape.

As part of the greater Yellowstone ecosystem, this site near Big Sky Ski Resort is an excellent example of sustainable, green development.

